



# Predictive Maintenance with Aspen Mtell

Incorporate failure prediction into your maintenance strategy to establish an environment where equipment doesn't break down.

## Deliver on the Promise of Failure Prediction

Aspen Mtell can predict asset failures before they occur by leveraging machine learning to uncover the hidden relationships between asset health, operational, and process data.

## Why Aspen Mtell?

- **Monitor Asset Performance and Increase Equipment Reliability**  
Get early and accurate warnings on impending failure by deploying advanced first principles, AI and machine learning powered Agents, and custom codes created by data scientist.
- **Reduce Maintenance and Operational Costs**  
Reduce unnecessary or emergency maintenance activities for improved scheduling, spares management, increased productivity and operational efficiency.
- **Enhance Operational Efficiency and Fulfill Sustainability Targets**  
Optimize asset performance, minimize waste, improve worker safety, and align with corporate objectives.

**90%**

Reduction in Emergency Maintenance

**50%**

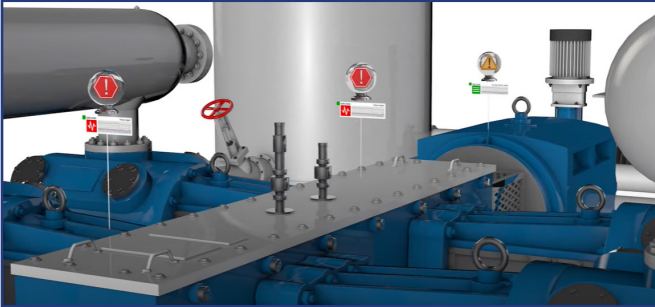
Reduction in PM Costs

**5%**

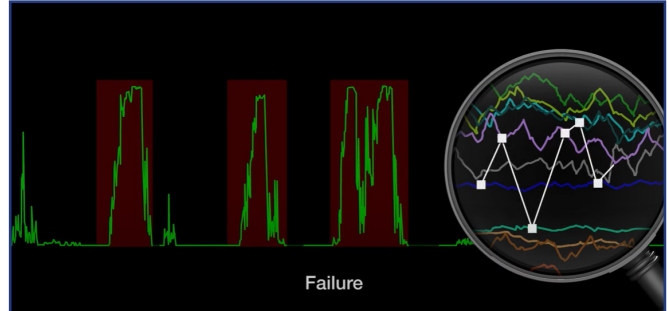
Increase in Production Improvements

**Request a Demo:**  
[askTRM@trmnet.com](mailto:askTRM@trmnet.com)

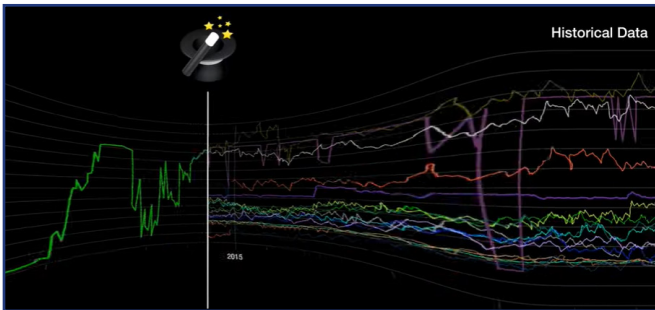
## Aspen Mtell Key Features



**Cutting Edge Machine Learning Algorithms** analyze historical and real-time data, providing predictions for potential issues.



**Real-time Monitoring** with convenient dashboards to gain insights into plant and business performance.



**Flexible Integration** with equipment and systems found in manufacturing including plant historians, EAM systems, and more.



**Actionable Insights** empower your team to make informed decisions through a consolidated alert management dashboard.

## Ready to Predict Equipment Failures with Aspen Mtell?

Our team of seasoned experts is here to guide you through your predictive maintenance journey.

- Implementation and Integration
- Training and Knowledge Transfer
- Customization and Configuration
- Ongoing Support and Optimization

Total Resource Management specializes in seamlessly integrating market leading Enterprise Asset Management (EAM) and Asset Performance Management (APM) digital technologies – from IBM, SAP, and Aspentech – and operational expertise to elevate your organization's asset management practices. As gaps between your people, processes, and technology are eliminated you'll achieve better reliability and millions in savings.

Learn more at [www.trmnet.com](http://www.trmnet.com)

TRM HEADQUARTERS

5695 King Centre Drive | Suite #200 | Alexandria, VA 22315  
P: 705.548,4285 | [www.trmnet.com](http://www.trmnet.com)