

TRM Safety Tagging System™

- Improve safety
- Increase information availability
- Reduce cost of outage events
- Track and audit compliance automatically
- Reduce staff hours for issuing documentation
- Tailor to your existing systems and processes

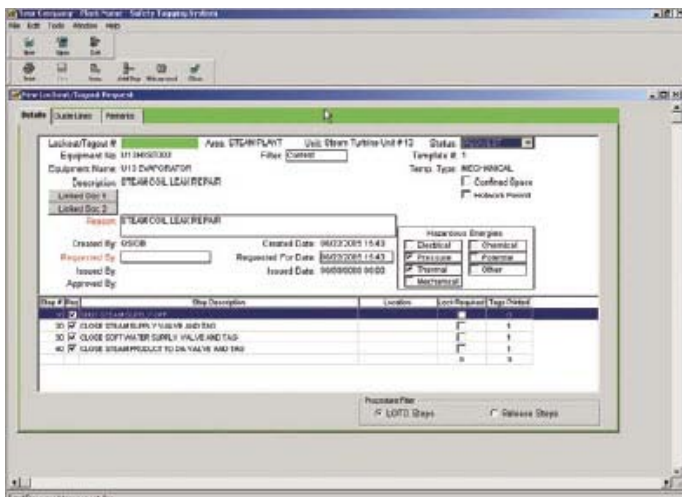
TRM Safety Tagging System is an efficient and solution-orientated approach to improving worker safety

Protect your company's equipment and system service workers from the uncontrolled release of hazardous energy! Energy, utility and process-driven companies are dangerous environments for personnel who service plant equipment. Hazardous energy may be released during the installation, maintenance, service or repair of machines, equipment or systems – energy that may cause serious injuries or (in rare cases) death. Standard lockout/tagout procedures require that companies shut down equipment, isolate it from energy sources and prevent the release of hazardous energy. As an employer, you want to take every possible step to protect your service team.

That's why the TRM STS safety tagging system can be such a valuable solution. This safety software helps you comply with OSHA's 1910.147 and 1910.269 energy isolation requirements. It also protects the integrity of your lockout/tagout process and offers the ability to customize to your company's procedures. TRM STS can be linked with leading enterprise asset management (EAM) systems, such as Maximo®, to improve maintenance planning and scheduling. When you integrate TRM STS with your EAM system, your company benefits from increased work process effectiveness, more actual "wrench time" and improved overall quality.

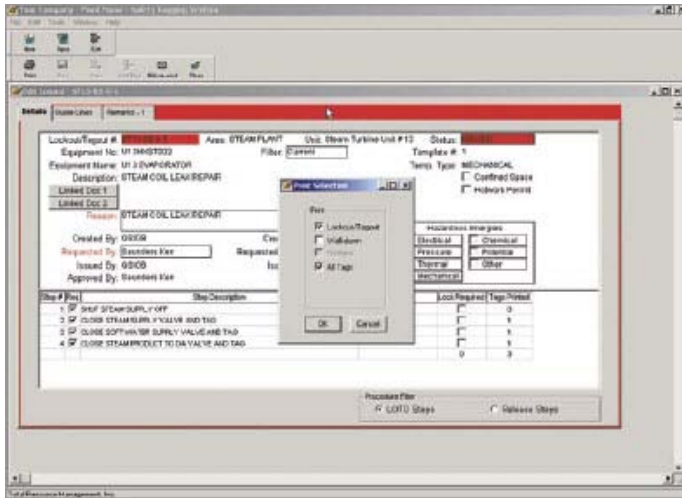
TRM STS is a client server solution that allows your personnel to quickly and efficiently prepare, approve, track and audit lockouts and tagouts. This easy-to-use performance enhancement tool is designed to control and track the entire lockout/tagout process from request through approval, including the printing of tags and required documents, verifications of locks or tags hanging or removed, and archiving historical data.

TRM STS features the ability to store and maintain OSHA 1910.147 required pre-written lockout/tagout procedures. These procedures can then be used to develop required lockouts and tagouts. A draft and request section is provided that enables the creation of outage or turnaround lockouts and tagouts in advance of the planned event. An electronic log book is maintained showing issued or active lockouts and tagouts. When the lockout and tagout is completed or removed the data is archived in a historical section.



Standardizing the lockout/tagout process saves time and customizable drop-down lists enable consistency for recurring procedures.

We customize the implementation of TRM STS to meet the specific needs of your organization.



Increase the legibility and consistency of your printed forms with TRM STS.

TRM STS is adapted to meet the specific needs of your organization. The standard STS framework is combined with your lockout and tagout processes, tags, and forms to create the finished product. Essentially we are automating your best practices.

Your Customized TRM STS Features

- Built-in security allows for the control of access to sections or functions of the software.
- Extensive use of drop-down lists for ease and consistency when performing repetitive and recurring procedures
- Printed forms that match your current forms
- Database compatibility with Microsoft®, Sybase®, and Oracle®
- Optional modules including "Confined Space" and "Hot Work" permits

Plant managers at more than 75 power plants and process-driven organizations – including chemical companies, pharmaceutical firms, utilities and energy facilities – already are reaping the benefits of TRM STS. Find out today how this solution can support your organization's strategic plans to reduce operation and maintenance costs, increase plant availability, improve plant operations and support compliance with environmental, health and safety regulations.

Improved Safety

Standard lockout and tagout procedures stored in STS provide a fast and consistently accurate method for ensuring a safe working environment for maintenance.

Reduced Staff Hours

Standardizing the lockout/tagout process saves time. STS also builds in efficiencies such as increasing the legibility and speed of paperwork by generating printed tags and forms.

Increased Information Availability

Using a networked solution provides users and management with real-time information. It also ensures accountability by assigning users access based on their level of responsibility.

Reduced Cost of Outage Events

Lockout/tagouts can be prepared in advance so they are ready for issue at the start of an outage or turnaround. TRM STS also enables better management of outage-related lockout/tagouts, making it easier and less expensive to bring systems back online.

Auditable Compliance

An audit trail is created from the moment a lockout/tagout is requested to the moment it is archived. The history of your lockout/tagouts is easily available.

Easy Implementation

Your business processes are reflected in your STS configuration and your current process, nomenclature, forms, tags and reports align within the STS framework. Your electronic data is migrated to the STS database and printed forms are formatted to match your current forms.

About TRM

Total Resource Management (TRM) is focused on improving the asset and operational performance of organizations through the effective use of information technologies. TRM is an IBM Premier Business Partner with over fifteen years experience delivering asset and service management solutions based upon IBM Maximo. TRM supports clients across a wide range of industries, including government, defense, cities, facilities, energy, utilities, transportation and life sciences. TRM is based in Alexandria, Virginia and has business centers across the U.S. For more information, visit www.trmnet.com or call 703-548-4285.